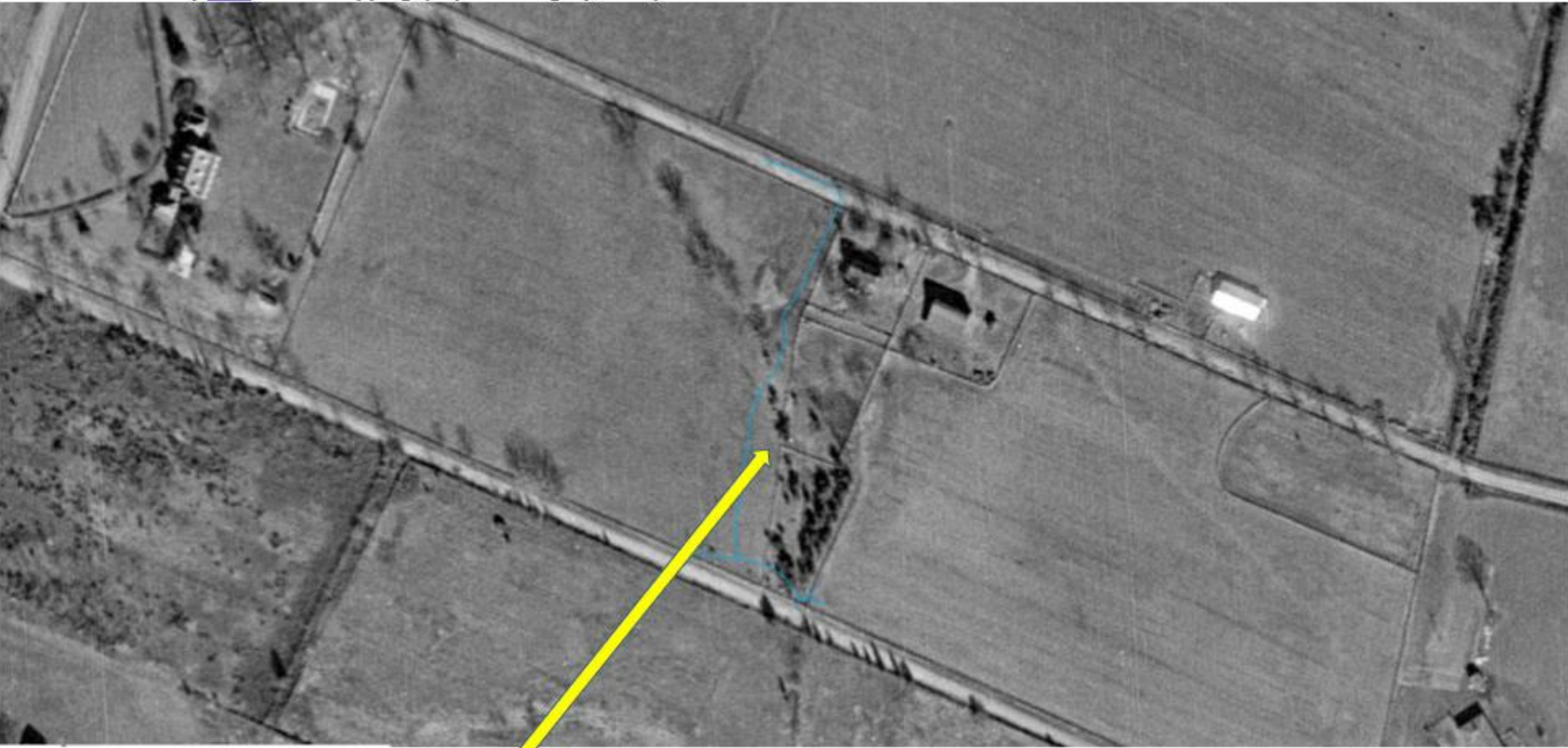








From Fairfax County [Jade](#) online mapping (Layers - Imagery, 1953)





From Fairfax County [Jade](#) online mapping (Layers - Imagery, 1976)





From Fairfax County [Jade](#) online mapping (Layers - Imagery, 2022)







The north-south strip of open space overlaps the channel of the Mosby Woods tributary. That open space could remain wooded and preserve the stream.

The open space could connect to the tree preserve area alongside the walking loop to protect all of the stream.





**Lewis Creek, Staunton, Virginia**



**Creek Walk, San Luis Obispo, California**

**Two examples of small streams incorporated as amenities into urban settings while retaining much of their natural character**





Small and incised and unprotected, but it is still a living stream. It deserves to be cherished as an amenity and not buried as a nuisance.